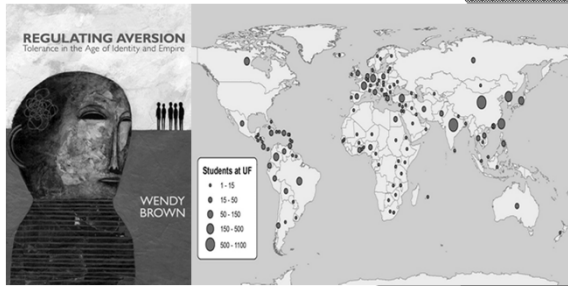


ANT 2000 - General Anthropology (Fall 2010)  
Lecture 22 – Global Changes and the Role of Anthropology



---

---

---

---

---

---

---

---

ANT 2000 - General Anthropology (Fall 2010)  
Lecture 22 – Global Changes and the Role of Anthropology

**Modernization** – the process of economic change, whereby developing societies acquire some of the social and political characteristics of Western industrial societies.

1. Technological Development
2. Agricultural Development
3. Urbanization
4. Industrialization
5. Telecommunication



---

---

---

---

---

---

---

---

ANT 2000 - General Anthropology (Fall 2010)  
Lecture 22 – Global Changes and the Role of Anthropology

**Modernization**

1. Technological Development – replace traditional knowledge
2. Agricultural Development – shift to commercial farming
3. Urbanization – movement from rural to urban areas
4. Industrialization – fossil fuels driving production (machines)
5. Telecommunication – digital media encourages global sharing of ideas and culture



---

---

---

---

---

---

---

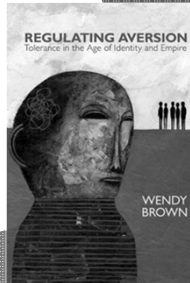
---

**ANT 2000 - General Anthropology (Fall 2010)**  
**Lecture 22 – Global Changes and the Role of Anthropology**

**Global Transnational Culture(s)**

Multiculturalism – public policy for managing cultural diversity in a multi-ethnic society, officially stressing mutual respect and tolerance for cultural differences within a country's borders

Problems with grammars of tolerance



---

---

---

---

---

---

---

---

**ANT 2000 - General Anthropology (Fall 2010)**  
**Lecture 22 – Global Changes and the Role of Anthropology**

**POWER**

**Hard Power** – coercion that is backed up by economic and military force

**Soft Power** – co-optive power that presses others through attraction and persuasion to change their ideas, beliefs, values, and behaviors

**Structural Power** – power that organizes and orchestrates the systemic interaction within and among societies, directing economic and political forces on the one hand and ideological forces that shape public ideas, values, and beliefs on the other

**Structural Violence** – physical and/or psychological harm (including repression, environmental destruction, poverty, hunger, illness, and premature death) caused by impersonal, exploitative, and unjust social, political, and economic systems

---

---

---

---

---

---

---

---

**ANT 2000 - General Anthropology (Fall 2010)**  
**Lecture 22 – Global Changes and the Role of Anthropology**

**POWER**

**Hard Power** – coercion that is backed up by economic and military force

**Soft Power** – co-optive power that presses others through attraction and persuasion to change their ideas, beliefs, values, and behaviors

**Structural Power** – power that organizes and orchestrates the systemic interaction within and among societies, directing economic and political forces on the one hand and ideological forces that shape public ideas, values, and beliefs on the other

**Structural Violence** – physical and/or psychological harm (including repression, environmental destruction, poverty, hunger, illness, and premature death) caused by impersonal, exploitative, and unjust social, political, and economic systems

---

---

---

---

---

---

---

---

**ANT 2000 - General Anthropology (Fall 2010)**  
**Lecture 22 – Global Changes and the Role of Anthropology**

**POWER**

**Structural Violence** – physical and/or psychological harm (including repression, environmental destruction, poverty, hunger, illness, and premature death) caused by impersonal, exploitative, and unjust social, political, and economic systems

Examples include:

- Overpopulation and Poverty
- Hunger and Obesity
- Pollution and Global Warming

---

---

---

---

---

---

---

---

**ANT 2000 - General Anthropology (Fall 2010)**  
**Lecture 22 – Global Changes and the Role of Anthropology**

**Bringing Structural Power and Violence Home**

Structural Inequality at the University of Florida

Lets look at basic statistical graphics to tell a story about the ethnic and gender make-up of the knowledge industry at the University of Florida. I want to look at the university as a factory, one that produces knowledge. UF is part of a larger knowledge industry called *academia*. It produces usable things (e.g. data) that are valued in the market economy of the modern world.

This metaphor becomes slippery when we think about things like the *means of production* and who controls them. There are two broad groups managing such resources within most universities: the administration and the faculty. Do you think the ethnic and gender make-up of such groups matter to what kind of knowledge is produced and valued?

---

---

---

---

---

---

---

---

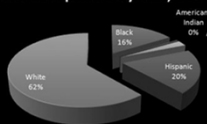
**ANT 2000 - General Anthropology (Fall 2010)**  
**Lecture 22 – Global Changes and the Role of Anthropology**

**Bringing Structural Power and Violence Home**

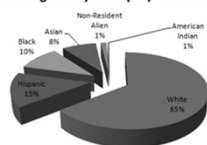
Structural Inequality at the University of Florida

Let's start at the beginning, with the undergraduates. The race and gender percentages of this group are often examined as a way to 'measure' the fairness of an institution. In other words, do minorities and women have roughly equal access to higher education?

**Florida Population by Race, 2007**



**Undergrads by Race (UF) - Fall 2008**



---

---

---

---

---

---

---

---

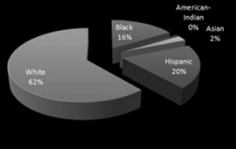
**ANT 2000 - General Anthropology (Fall 2010)**  
**Lecture 22 – Global Changes and the Role of Anthropology**

**Bringing Structural Power and Violence Home**

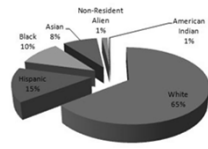
Structural Inequality at the University of Florida

In terms of race, UF is more or less on par with the state's general population. Minority groups have slightly lower numbers enrolled at UF than in the general population; but, of course, UF is a historically white university (HWC)

**Florida Population by Race, 2007**



**Undergrads by Race (UF) - Fall 2008**




---

---

---

---

---

---

---

---

---

---

---

---

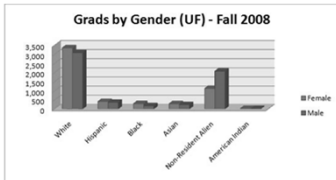
**ANT 2000 - General Anthropology (Fall 2010)**  
**Lecture 22 – Global Changes and the Role of Anthropology**

**Bringing Structural Power and Violence Home**

Structural Inequality at the University of Florida

UF does pretty well in its admission of female students, and female undergraduates outnumber their male counterparts in each racial group.

**Grads by Gender (UF) - Fall 2008**




---

---

---

---

---

---

---

---

---

---

---

---

**ANT 2000 - General Anthropology (Fall 2010)**  
**Lecture 22 – Global Changes and the Role of Anthropology**

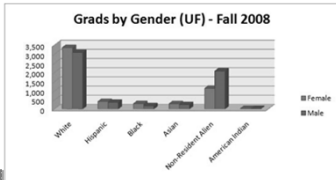
**Bringing Structural Power and Violence Home**

Structural Inequality at the University of Florida

The next set of figures I want to look at are the number of graduate students at UF along gender and race lines. The graduate students make up the next generation of knowledge industry managers.

So, how do the numbers at UF stack up for the grads?

**Grads by Gender (UF) - Fall 2008**




---

---

---

---

---

---

---

---

---

---

---

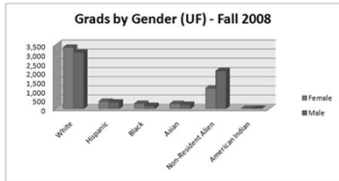
---

**ANT 2000 - General Anthropology (Fall 2010)**  
**Lecture 22 – Global Changes and the Role of Anthropology**

**Bringing Structural Power and Violence Home**

Structural Inequality at the University of Florida

Again, in terms of gender UF seems to be privileging their female students by admitting more of them. There is one major difference though, the number of female student within the non-resident graduates is significantly lower.




---

---

---

---

---

---

---

---

---

---

---

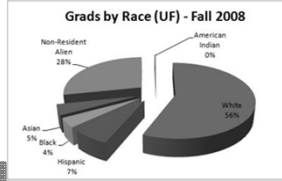
---

**ANT 2000 - General Anthropology (Fall 2010)**  
**Lecture 22 – Global Changes and the Role of Anthropology**

**Bringing Structural Power and Violence Home**

Structural Inequality at the University of Florida

US minority numbers take a significant hit, as do White Americans. Why's this? It's the large number of foreign students, many of whom work in the tech and 'hard' science fields. What is the role of these students in their departments? Are they becoming part of the next generation of knowledge industry leaders? Does it matter if they do so in America or in their country of origin? How does training foreign students contribute to a kind of (neo)Colonization of the Mind?




---

---

---

---

---

---

---

---

---

---

---

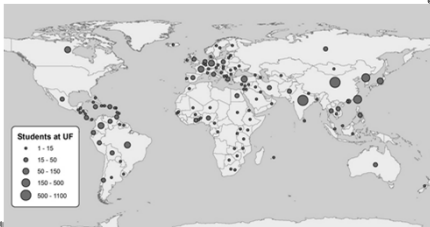
---

**ANT 2000 - General Anthropology (Fall 2010)**  
**Lecture 22 – Global Changes and the Role of Anthropology**

**Bringing Structural Power and Violence Home**

Structural Inequality at the University of Florida

These ponderings beg the question, "How does our foreign student population break down nationally?"




---

---

---

---

---

---

---

---

---

---

---

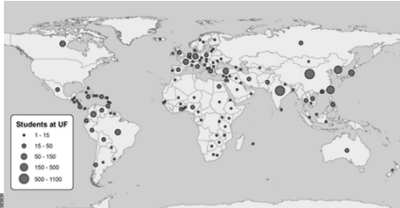
---

ANT 2000 - General Anthropology (Fall 2010)  
Lecture 22 – Global Changes and the Role of Anthropology

Bringing Structural Power and Violence Home

Structural Inequality at the University of Florida

Many come from countries stereotyped as producing mathematically and scientifically gifted students. What number of female and minority students gain entry to the knowledge industry as full-time producers (e.g., tenured faculty, tenure-track faculty).



---

---

---

---

---

---

---

---

---

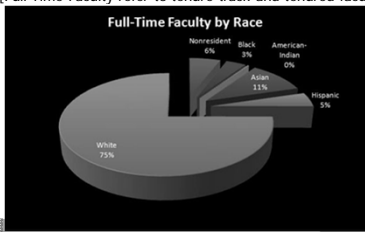
---

ANT 2000 - General Anthropology (Fall 2010)  
Lecture 22 – Global Changes and the Role of Anthropology

Bringing Structural Power and Violence Home

Structural Inequality at the University of Florida

That number is relatively low. As you can see, by the time a generation rises to the level of full-time faculty we see a return to a White dominated institution. [Full-Time Faculty refer to tenure-track and tenured faculty]



---

---

---

---

---

---

---

---

---

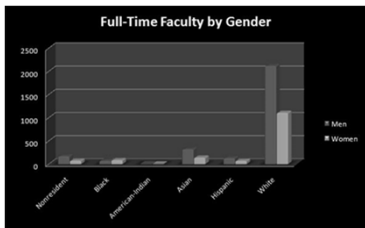
---

ANT 2000 - General Anthropology (Fall 2010)  
Lecture 22 – Global Changes and the Role of Anthropology

Bringing Structural Power and Violence Home

Structural Inequality at the University of Florida

As well as a return to a male-dominated faculty.



---

---

---

---

---

---

---

---

---

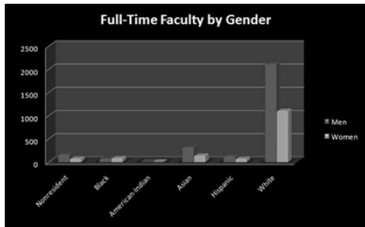
---

ANT 2000 - General Anthropology (Fall 2010)  
Lecture 22 – Global Changes and the Role of Anthropology

Bringing Structural Power and Violence Home

Structural Inequality at the University of Florida

As well as a return to a male-dominated faculty.



---

---

---

---

---

---

---

---

---

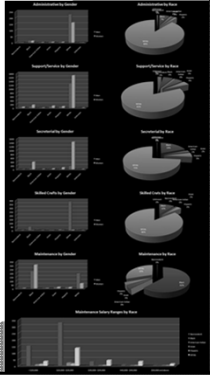
---

ANT 2000 - General Anthropology (Fall 2010)  
Lecture 22 – Global Changes and the Role of Anthropology

Bringing Structural Power and Violence Home

Structural Inequality at the University of Florida

What about the administration?



---

---

---

---

---

---

---

---

---

---

ANT 2000 - General Anthropology (Fall 2010)  
Lecture 22 – Global Changes and the Role of Anthropology

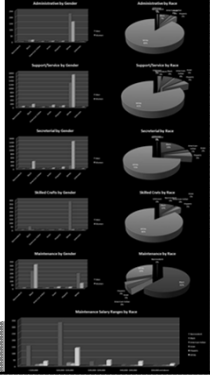
Bringing Structural Power and Violence Home

Structural Inequality at the University of Florida

What about the administration?

Since institutions like universities produce successive generations of law makers, political personalities, and power brokers in general, shouldn't we have equal representation in terms of race in gender across the board? Don't we deserve equal representation in those institutions which wield power in our lives?

<http://anthroyeti.blogspot.com/2009/10/political-economy-of-knowledge-at-uf.html>



---

---

---

---

---

---

---

---

---

---